

Installation and Operating Instructions

Fan Forced Wall Heater RSH/RDH/TWH Series

6902270000

Installation Instructions

Congratulations on purchasing a small wall heater from Dimplex North America. Your heater is manufactured using the highest quality materials and workmanship and will provide many years of trouble free service.

This heater is designed for permanent installation only, care should be taken to install according to the following instructions. All required clearances should be maintained, in addition all electrical wiring and connections should comply with local electrical codes.

! NOTE: It is extremely important to read all information labels. Care must be taken to ensure that the heater is rated the same voltage as the electrical supply wires. Failure to do so could result in unsafe heater operation as well as damage to the unit. If replacing an existing heater, check the labels of the old heater to ensure the voltage of the new heater is compatible.

All units should be controlled by means of a regulating thermostat. Certain models only are provided with built in thermostats, check the **Model Key Information** section for verification. Wall thermostats should comply with the voltage and wattage of all heaters on the circuit. Built in thermostats are not suitable for Register Grill Models.

All installations require the following components:

- 1) Recess Mount Box (Model 1011650100)
- 2) Heater Assembly (See nameplate Label)
- 3) Grill (Either Multi- Directional Style or Register Style)

An optional Surface mount box is available for installations that are not recessed in wall cavity.

Step 1 – Placement

All units are designed for placement in either interior or exterior walls. Care should be taken to provide a minimum of 8" clearance from floors, ceilings and adjacent walls. Once installed, the airflow through the heater should not be blocked in any way. Maintain three (3) feet clearance of objects from the front of unit. Maintain a spacing of three (3) feet between heaters in order to prevent re-circulation of heated air. Insulation surrounding the back and sides of the recess mount box will not affect performance. Ensure insulation is rated for temperatures up to 85°C.

! NOTE: Certain flooring and wall covering materials (particularly those incorporating clear vinyl materials tend to distort at temperatures in the vicinity of 60 C (140 F). Material shall be checked prior to installation to determine

Figure 1

Multi-Directional Grill Orientation
for use with 6902270000 RSH/RDH/TWH Series Heaters

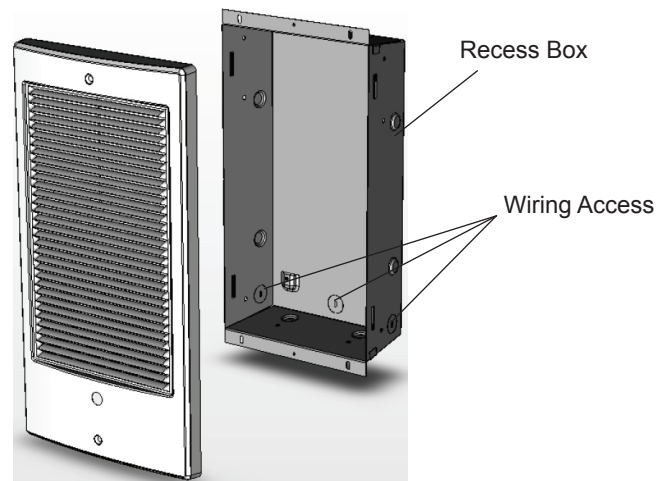


Figure 2

Alternate Multi-Directional Grill Orientation



! NOTE: Maintain a minimum clearance of 8" from adjacent walls, floors and ceilings on all four sides of the grill

if discoloration will occur. Units are not approved for placement in floors or ceilings. Do not install in any area where combustible vapors, gases, dusts or liquids are present. Fire or explosion may occur.

Step 2 – Mounting The Recess Box

Determine the desired orientation of unit. Provide an opening in wall 14 1/4" x 8 5/8" x 3 3/8" deep minimum. Care should be taken to install the recess box in the correct orientation to accommodate grill. **Note the position of the electrical entry knockouts and orient recess box according to Figure 1.** Ensure all required clearances are met.

Ensure recess box flanges are flush with the finished wall surface. For new construction, the sides of the recess box are marked with guidelines to allow for 1/2" and 5/8" drywall thickness if drywall is to be added at a later date. Secure recess box to studs with screws using holes provided on sides or flange of recess box. Remove appropriate electrical knockout and secure supply wire using an approved strain relief connector leaving 6" of wire leads in the recess box.

Step 3 - Mounting the Heater Assembly

Insert the heater assembly into the recess box ensuring that the tab on the heater assembly slides into the slot in the recess box. Ensure the heater assembly is fully seated and secure to the recess box using the captive screw provided.

Step 4 –Electrical Connections

⚠ WARNING: Hazard of severe shock.

⚠ CAUTION: Disconnect all power coming to heater at main service panel before wiring or servicing.

Turn off power supply at the electrical panel. Route supply wires from circuit breaker through wall thermostat to heater. For models with built in thermostat route from circuit breaker to heater.

Supply wire must be of **two wire plus ground** variety, with a rating capable of handling all loads on the circuit. Supply wire should be rated for a minimum of 60C. Make electrical connection according to relevant wiring diagrams. Make connections using approved wire nut connectors and secure

the grounding wire to the ground screw on the heater chassis. On models with Register Style Front Grills only, a terminal box cover plate is provided. Insert the tabs of the cover plate into the slots and secure the other side of plate with the screws provided.

Step 5 – Secure the Front Panel

If your unit has a built in thermostat remove the plug on the front panel. Fasten the Front Grill using the screws provided. It is important to note that the front grill is oriented in the required positions shown in Figure # 1 and on the Multi – Directional grill. For units with built in thermostat push knob onto thermostat shaft through plug hole.

Operation And Maintenance

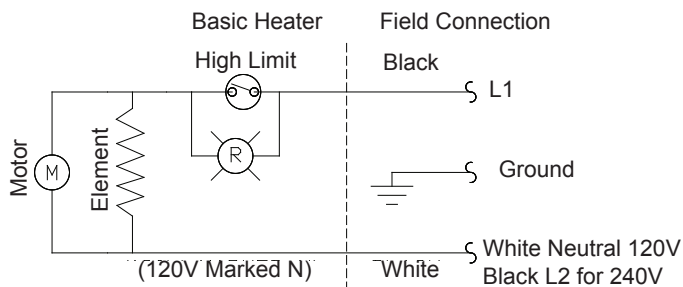
⚠ CAUTION: Disconnect all power coming to heater at main service panel before wiring or servicing.

For units with built in thermostats, rotate the thermostat knob fully clockwise. Heater should activate. When the room reaches the desired temperature, slowly rotate the knob counterclockwise until unit shuts off. The heater will automatically cycle around this preset temperature setting. All units contain an Automatic Reset High Temperature Cutout, which will shut the heater off in the event of abnormally high operating temperatures. In addition a Red Warning Light will activate providing a visual warning. If this condition exists, disconnect all power to the unit and call a licensed electrician for service. Do not use heater until the problem is determined and corrected. **ENSURE POWER TO THE UNIT IS DISCONNECTED PRIOR TO SERVICING OR PERFORMING CLEANING**

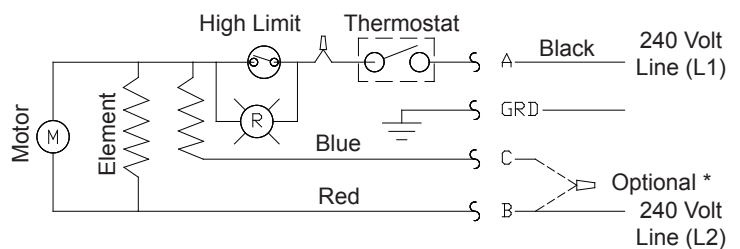
Model Key Information

PRODUCT LEGEND: X YY R WW VV B T C Z											
X	YY		R	WW		VV		B	T	C	Z
R	SH	SINGLE ELEMENT	R	05	500	07	240	B	T	C	W
T	DH	DOUBLE ELEMENT		07	750	10	240				A
	WH	SINGLE ELEMENT		10	1000	11	120				
				15	1500	21	208				
				20	2000	31	240/208				

RSH & TWH Models Wiring Diagram



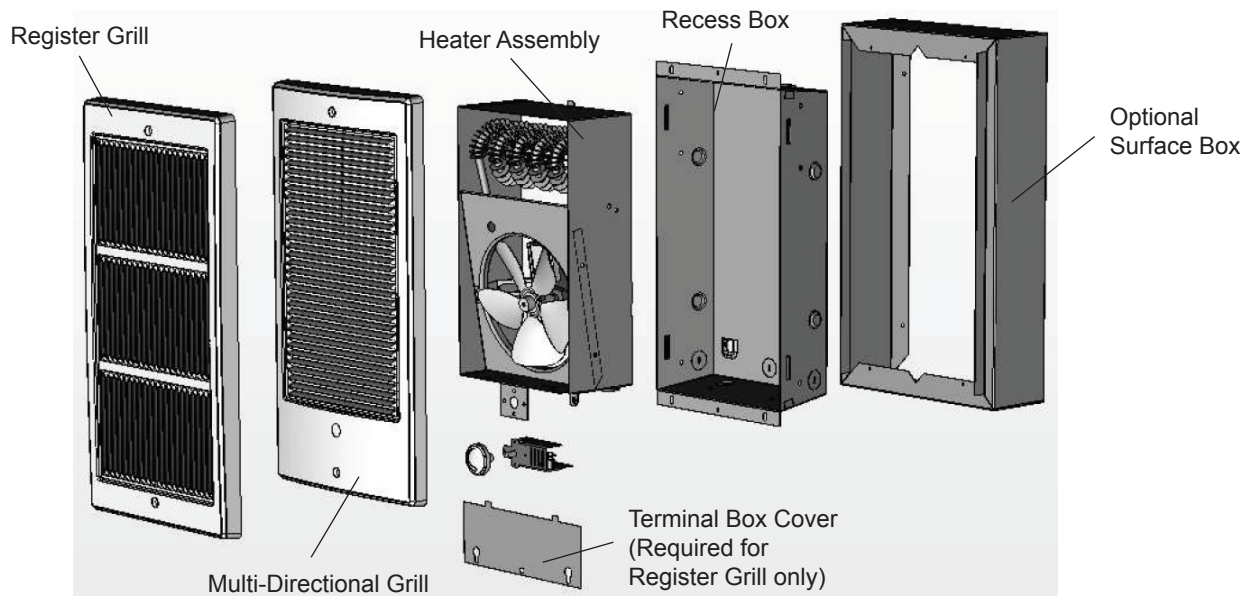
RDH Models (Double element) Wiring Diagram



! NOTE: All units rated for 240/208 V provide 76% wattage of 240V rating when connected to 208 V.

! NOTE: For reduced heat output do not connect wire C to 240 V line (L2). Wire C must be capped off using a wire nut supplied by the customer when not used.

Cat. No.	Volts	Wattage	Connections
RDH2010 or RDHR2010	240	2000W	L1-A, L2-B & C
		1000W	L1-A, L2-B ONLY*
RDH1507 or RDHR1507	240	1500W	L1-A, L2-B & C
		750W	L1-A, L2-B ONLY*



Replacement Parts

Grills

	<i>Part #</i>
Multi - Directional Grill - Almond	TWHA
Multi - Directional Grill - White	TWHW
Register Grill - Almond	TWHRA
Register Grill - White	TWHRW

Motors

120 V models	2000060003
240/ 208 V models	2000060001

Fan Blade

	5300130100
--	------------

High Limit Cutout

	00009201
--	----------

Recess Mount Box

	TWHC
--	------

Replacement Parts *Part #*

Single Element

120V 500W	2200520100
120V 750W	2200520200
120V 1000W	2200520300
120V 1500W	2200520400

240/208V 500/375W	2200520700
240/208V 750/500W	2200520800
240/208V 1000/750W	2200520900

240/208V 1500/1125W	2200521000
---------------------	------------

240/208V 2000/1500W	2200521100
---------------------	------------

Double Element

240/208V 2000/1500W	2200540900
---------------------	------------

240/208V 1500/1125W	2200540800
---------------------	------------

Accessories

TWHT1 _ Single Pole Thermostat Kit TWHSBA Surface Mount Box - Almond

TWHT2 _ Double Pole Thermostat Kit TWHSBW Surface Mount Box - White

Dimplex North America Limited

1367 Industrial Road • Cambridge ON Canada N1R 7G8

1-888-346-7539 • www.dimplex.com

In keeping with our policy of continuous product improvement, we reserve the right to make changes without notice.

