



**Marley**  
Engineered Products

## LFH1502P DIGITAL PORTABLE BASEBOARD HEATER

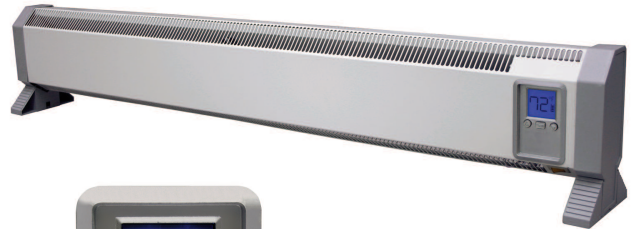
- UNIQUE PORTABLE ELECTRIC BASEBOARD WITH PROPORTIONAL CONTROL. UNIT HEATS ONLY WHEN HEAT IS REQUIRED.
- 120 VOLT HYDRONIC ELECTRIC ELEMENT PROVIDES YEARS OF SERVICE AND COMFORT.
- ELECTRONIC DIGITAL DISPLAY (LCD WITH BACKLIGHT) THREE BUTTON CONTROL EASY TO OPERATE.
- FIVE LEVELS OF HEAT OUTPUT THAT GENERATES HEAT ONLY WHEN NEEDED.
- UNIT IS ETL AND CETL LISTED.
- ON – OFF SWITCH WITH ON PILOT LIGHT.
- SELECT FAHRENHEIT (°F) OR CELSIUS (°C) TEMPERATURE SCALES.

Residential or commercial grade digital baseboard heater provides primary, secondary or supplemental heating for new construction or remodeling applications. Large LCD display allows user to clearly see temperature set points, no additional thermostat required for operation.

### APPLICATIONS

For supplemental heating of bedrooms, game rooms, family rooms and small areas in homes, apartments, condos, and offices.

This unique portable heater only provides heat when heat is needed. The electronic proportional digital control is automatic. In a cold room the heater starts heating with 1500 watts. As the room gets warmer, the output of heat decreases and automatically maintains the set point temperature. The heat output changes from 200 watts up to 1500 watts depending on the heat required for total comfort.



Closeup of digital control



### Other Features:

- Inlet and outlet grille protection to help prevent objects from entering the heater.
- Support legs blend smoothly with metal housing.
- Tip over switch prevents heater from operating if the heater is knocked over.
- Linear high temperature cutout safety device checks the entire length of heater element and will automatically shut off heater in the event of accidental air blockage.

MODEL	VOLTS	WATTS	AMPS	HEATER DIMENSIONS			WT.
				HEIGHT	WIDTH	LENGTH	
LFH1502P	120	1500	12.5	9 1/2"	4"	52"	27 lbs